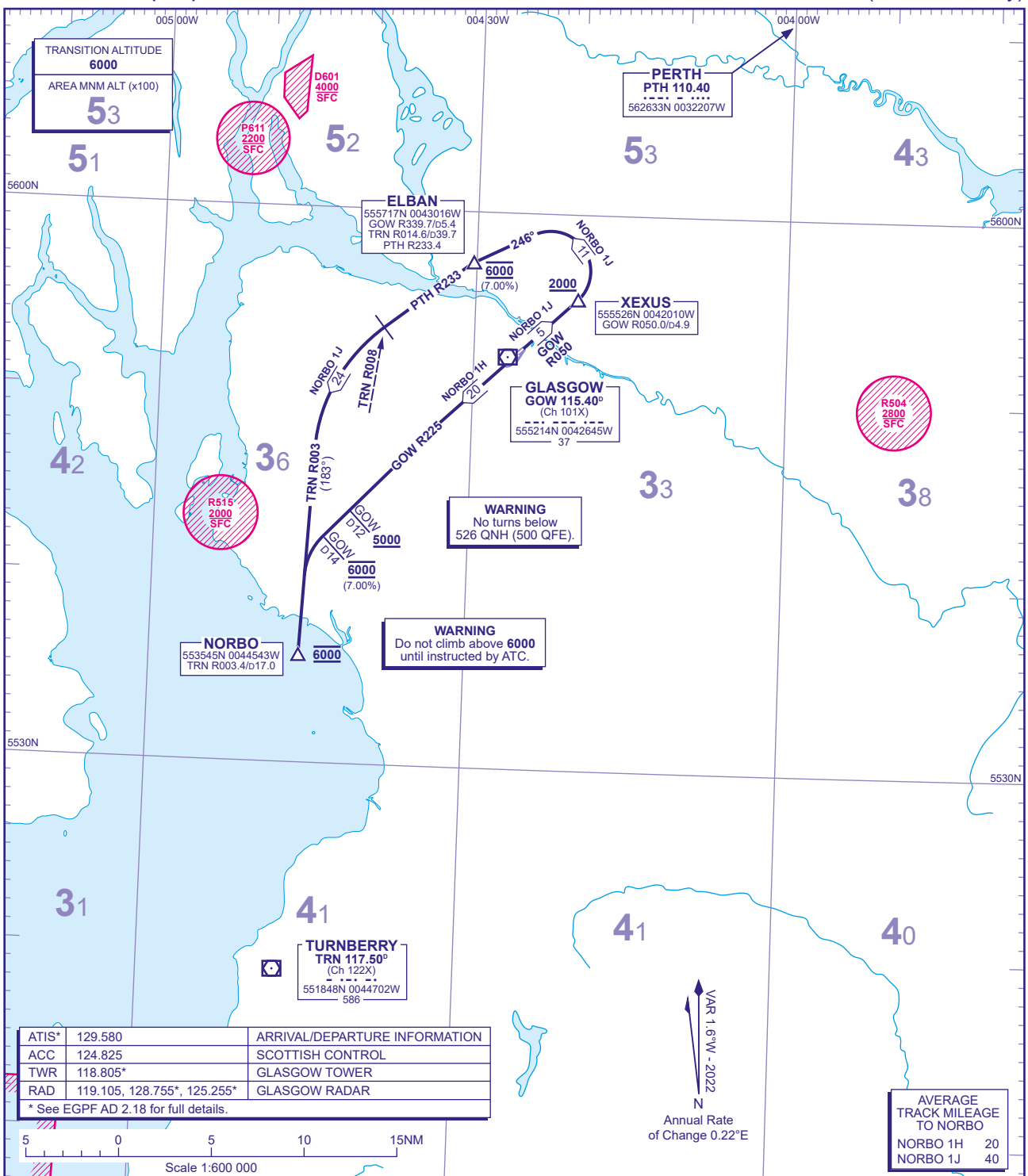


STANDARD INSTRUMENT CHART - ICAO

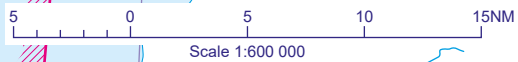
DISTANCES IN NAUTICAL MILES  
BEARINGS, TRACKS AND RADIALS ARE MAGNETIC  
ALTITUDES AND ELEVATIONS ARE IN FEET

GLASGOW  
NORBO (Jet aircraft only)



ATIS*	129.580	ARRIVAL/DEPARTURE INFORMATION
ACC	124.825	SCOTTISH CONTROL
TWR	118.805*	GLASGOW TOWER
RAD	119.105, 128.755*, 125.255*	GLASGOW RADAR

\* See EGPF AD 2.18 for full details.



NORBO 1H RWY 23	Climb straight ahead to intercept <b>GOW VOR R225</b> . Cross <b>GOW D12 5000</b> or above. Cross <b>GOW D14 at 6000</b> then turn left onto <b>TRN VOR R003 to NORBO</b> .	T256, L186, Y96.
<b>OBSTACLE CLEARANCE - RWY 23: Maintain minimum 3.8% climb to 1200.</b>		
NORBO 1J RWY 05	Climb straight ahead to intercept <b>GOW VOR R050</b> . Cross <b>GOW D4.9 (XEXUS) 2000</b> or above then turn left onto track 246° to <b>ELBAN (TRN VOR R014.6)</b> , crossing <b>ELBAN at 6000 (7%)</b> , to intercept <b>PTH VOR R233</b> . At <b>TRN VOR R008</b> turn left onto <b>TRN VOR R003 to NORBO</b> .	T256, L186, Y96.
<b>OBSTACLE CLEARANCE - RWY 05: Maintain minimum 4.5% climb to 1500.</b>		

GENERAL INFORMATION

- SIDs reflect Noise Abatement Procedures. See EGPF AD 2.21 for Noise Abatement Procedures.
- Climb gradients greater than 3.3% are required for obstacle clearance purposes, as indicated. In addition climb gradients greater than those necessary for obstacle clearance are required for ATC and airspace requirements as indicated.
- En-route cruising levels will be issued after take-off by 'Scottish Control'. Report callsign, SID designator, current altitude and cleared altitude on first contact with 'Scottish Control'.
- Maximum 250KIAS below FL100 unless otherwise authorised.
- Expect first CPDLC Data Link Authority to be EGPF.

CHANGE (8/25): TRN VOR RECALIBRATED. TRN RADIALS REVISED. NORBO 1H GOW D12 ALTITUDE RESTRICTION ADDED TO CHART.